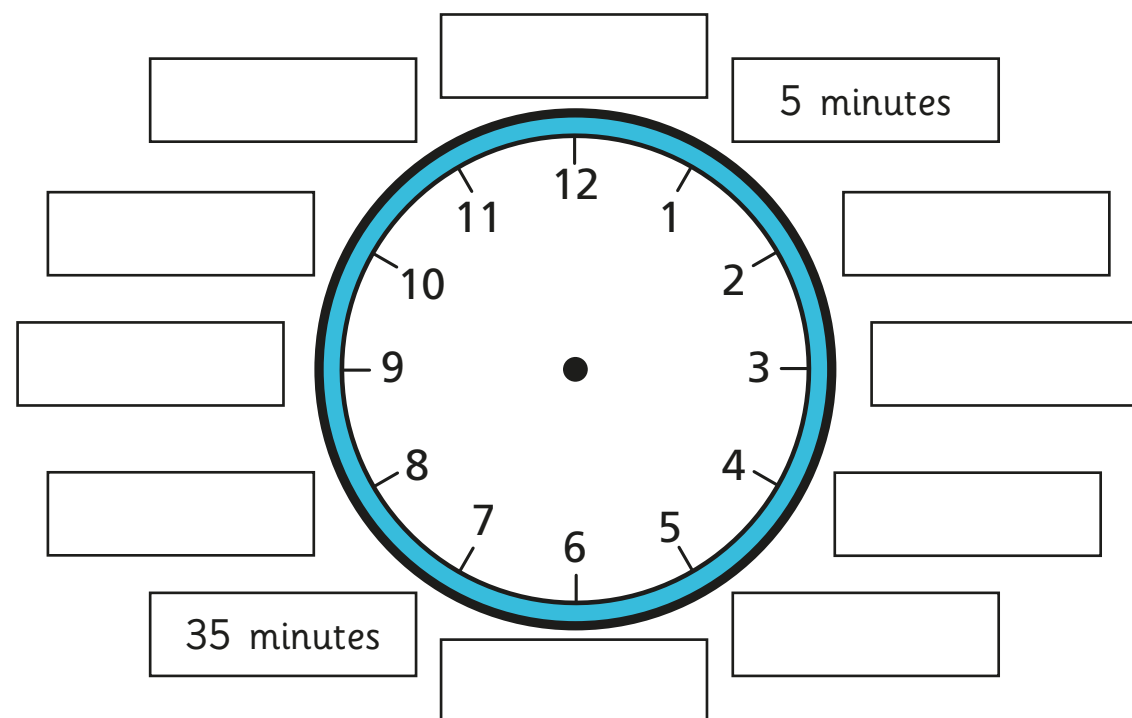
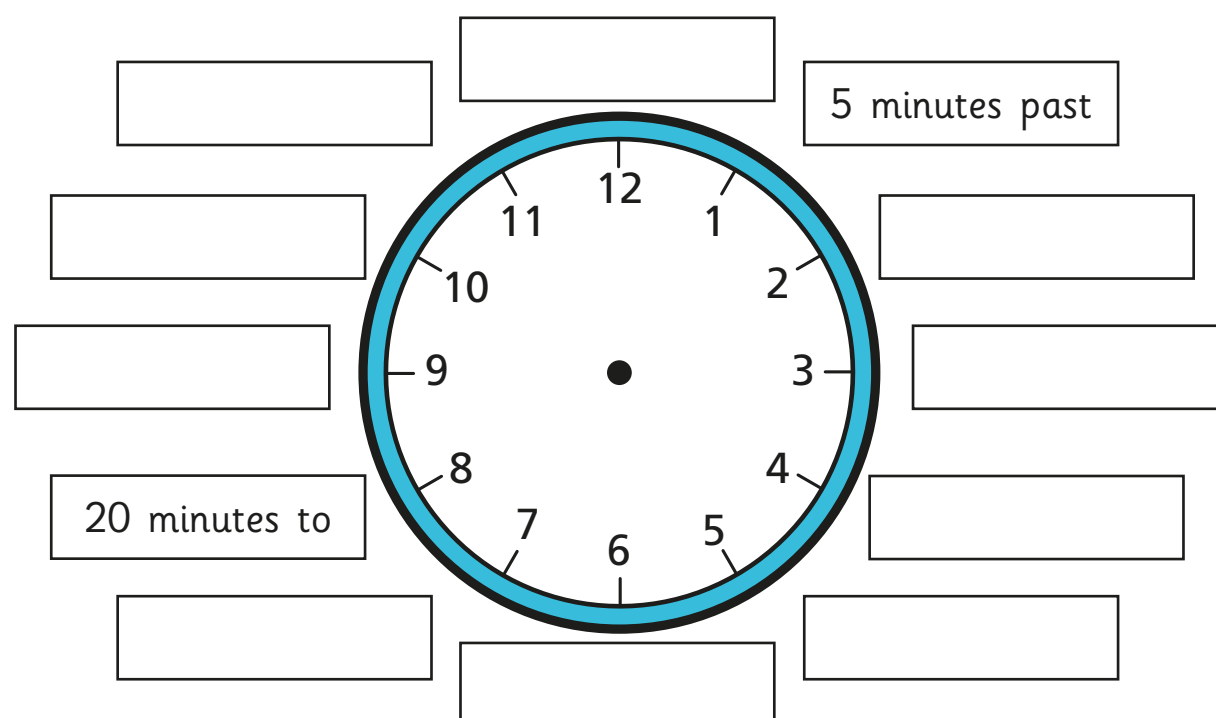


# Telling the time to 5 minutes

- 1 Label the clock to show the number of minutes past the hour.

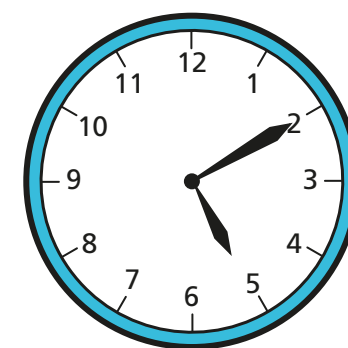


- 2 Label the clock to show what time would be shown if the minute hand was pointing to each interval.

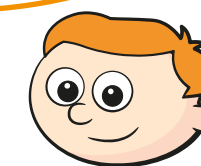


Is there more than one possible answer for each label?

3



The hour hand is pointing just after 5 and the minute hand is pointing to 2, so the time is 2 minutes past 5



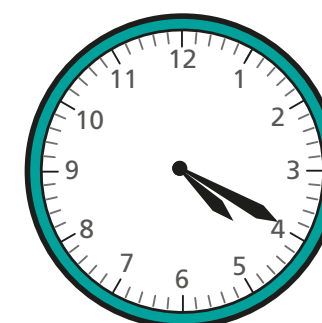
What mistake has Ron made?

What time is it? \_\_\_\_\_

4

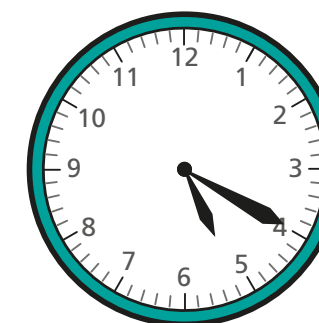
What time is shown on each clock?

a)



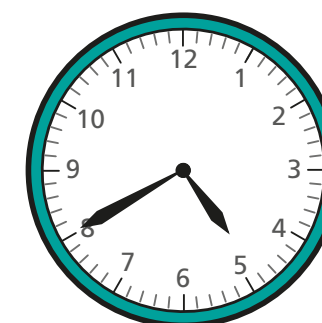
\_\_\_\_\_ minutes past \_\_\_\_\_

c)



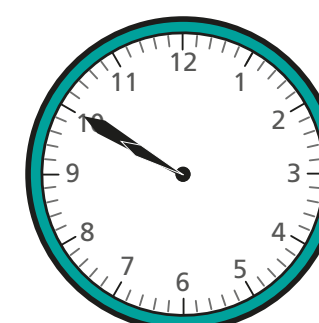
\_\_\_\_\_ minutes past \_\_\_\_\_

b)



\_\_\_\_\_ minutes to \_\_\_\_\_

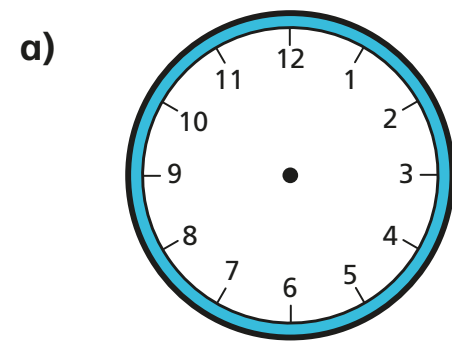
d)



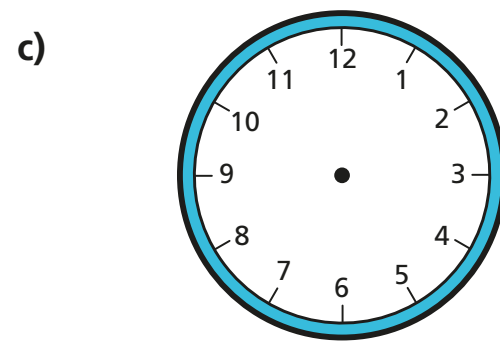
\_\_\_\_\_



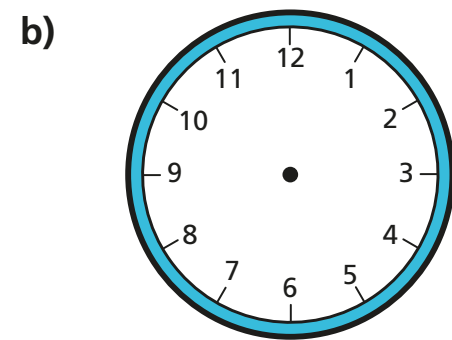
- 5 Draw the hands on the clocks to show the correct times.



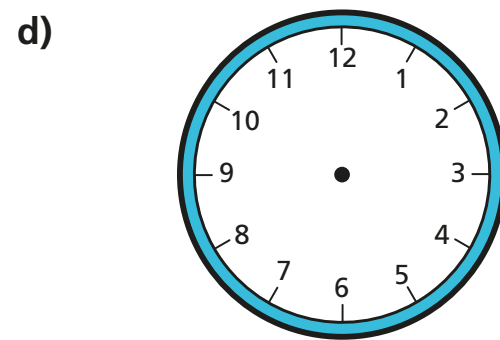
15 minutes past 6



25 minutes to 9

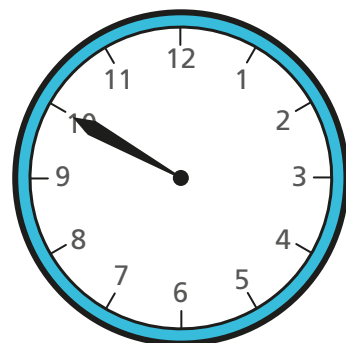


15 minutes to 9



5 minutes to 12

- 6 Jack wants to tell the time, but the hour hand has fallen off the clock.



There are 12 different possible times it could be during a full day.



Do you agree with Jack? \_\_\_\_\_

Talk about it with a partner.



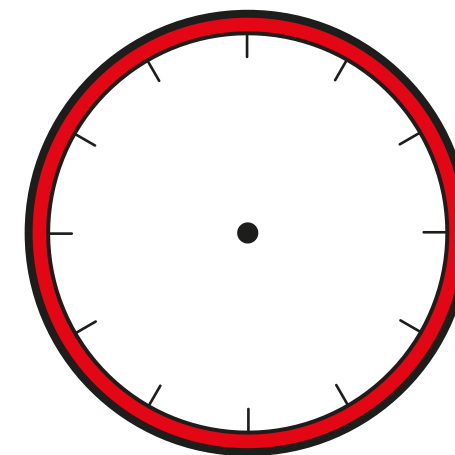
- 7 The minute hand and the hour hand of a clock are both pointing to an even number.  
It is before midday. What times could it be?  
Give three possible answers.

---

---

Compare answers with a partner. Can you find any more?

- 8 The numbers of the clock face were written in Roman numerals but they have been rubbed off.  
The current time has a V in the hour and a V in the minutes.



What time could it be? Draw your answer on the clock.  
Are there any other answers?

---

Talk about it with a partner.

